

# AGEAN<sup>®</sup>

Hand Crafted Turkish Cymbals

*The Master Touch...*

THE ART OF CYMBALS MAKING... THE ART OF CYMBALS MAKING...  
CYMBALS MAKING... THE ART OF  
THE ART OF CYMBALS MAKING... THE ART OF CYMBALS MAKING...  
THE ART OF CYMBALS MAKING... THE ART OF CYMBALS MAKING...





**Halil Kırmızıgül**  
General Manager

# AGEAN®

Hand Crafted Turkish Cymbals



**Mustafa Er**  
Production Director

Agean Cymbals are totally hand crafted by master cymbal smiths in Turkey where is the historical birthplace of cymbal.

Following several processes, discs are carefully hand hammered until they become a cymbal.

The art of cymbal making depends on hundred years ago. It takes many years of study and practice to become a cymbals smith.

Making a top quality cymbal requires 3 main ingredients.

**First:** The alloy is based on mixing tin and copper. Each company closely guarded the way of mixing these elements but, it basically depends on 80% copper, 20% tin.



**Second:** The raw alloy has to be casted into a disc, known as a cymbal blank, about the size of a CD and 5 to 10 mm thickness.

**Third:** The cymbal has to be hand hammered by a cymbal smith.

In the melting room, the cymbal blanks are repeatedly heated, this process also known tempering. This process changes the molecular structure and provides its durability and musical quality.

Once the cymbal was hammered according to its rough size, shape and thickness, then it is lathed. Some cymbals are hand-polished, some are left natural and some unlathed for a dry, dark, early tones.

Of course, there are many ways to make cymbals, for example with shaping automatic-hammered machine or even computer hammering but these ways can not hold the comparison with authentic and traditional Turkish Cymbal making way.

B20-B25 castings are rolled down to flat discs and then lathed down to precise thickness with cutting tools. This process makes Agean Cymbals totally hand crafted.

The classical B20 bronze alloy is used by Agean Cymbals for the series in the name of Customs and Natural. But Agean cymbals carried out an innovation and Agean Cymbals was the first to invent B-25 formula. So, by this way, Agean Cymbals has started to producing some of cymbals by using the method of B-25 formula.



THE ART OF CYMBALS MAKING... THE ART OF CYMBALS MAKING... THE ART OF CYMBALS MAKING... THE ART OF CYMBALS MAKING...

# CUSTOM SERIE

Hand hammered, traditional finishing. Warm and full sound with an extensive in the middle-stressed frequency spectrum. It is one of the best Turkish Cymbals.

## RIDE

16" 18" 19" 20" 21" 22"

## CRASH

12" 13" 14" 15" 16" 17" 18" 19" 20" 21" 22"

## HI-HAT

10" 12" 13" 14" 15" 16"

## SPLASH

6" 7" 8" 9" 10" 11" 12"

## CHINA

10" 12" 13" 14" 15" 16" 17" 18" 19" 20" 21" 22"



# CUSTOM BRILLIANT SERIE

Hand hammered, polished with old techniques. It has a musical and loving sound. They were particularly created for Pop and Rock Music

## RIDE

19" 20" 21" 22"

## CRASH

12" 13" 14" 15" 16" 17" 18" 19" 20" 21" 22"

## HI-HAT

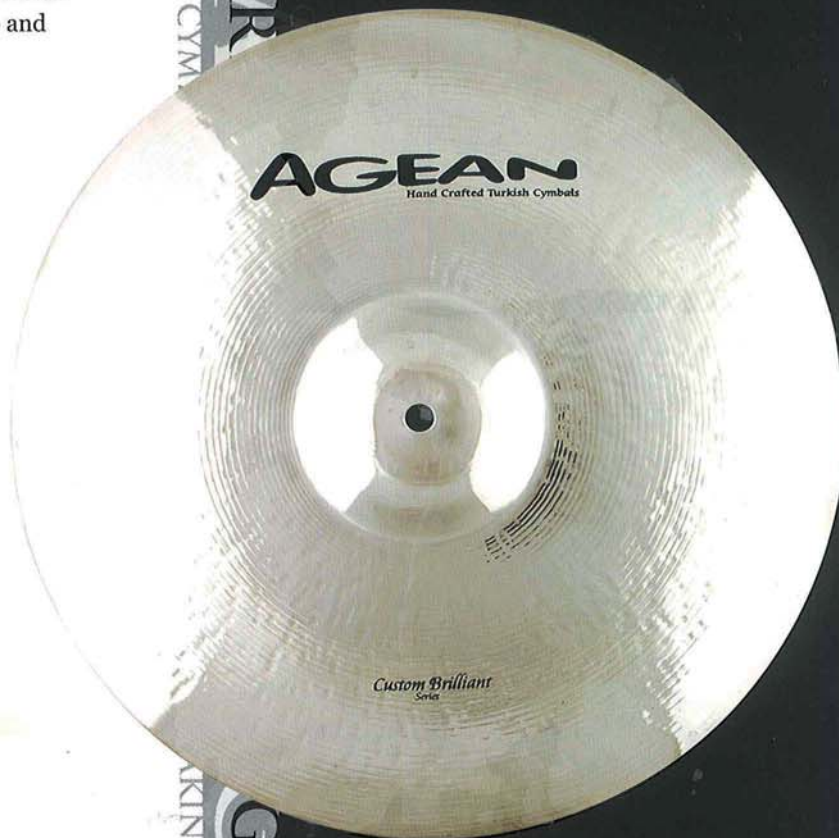
10" 12" 13" 14" 15" 16"

## SPLASH

6" 7" 8" 9" 10" 11" 12"

## CHINA

10" 12" 13" 14" 15" 16" 17" 18" 19" 20" 21" 22"



## EXTREME SERIE

Hand hammered, finely turned off with nature-left bell. The deep sound characters can be easily perceived as ping. Describing this cymbals isn't really easy because of its greatly.



### RIDE

19" 20" 21" 22"

### CRASH

12" 13" 14" 15" 16" 17" 18" 19" 20" 21" 22"

### HI-HAT

10" 12" 13" 14" 15" 16"

### SPLASH

6" 7" 8" 10" 11" 12"

### CHINA

10" 12" 13" 14" 15" 16" 17" 18" 19" 20" 21" 22"



## SPECIAL JAZZ SERIE

Hand hammered, this serie was created by the help of thoughts of famous drummers. It has a bewitching sound. These cymbals will be able to remind you the Old Turkish Cymbals. Together with acoustic and tepid sounds, it provides maximum capable of controlling. Stunng sound can answer to all the tiny touches of yours. It is not possible to think an alternative for Jazz Music instead of Special Jazz.



### RIDE

19" 20" 21" 22" 24"

### CRASH

17" 18" 19" 20" 21"

### HI-HAT

13" 14" 15" 16"

### SPLASH

8" 10" 12"

### CHINA

18" 19" 20"



# KARIA SERIE

Hand hammered with different clear hittings. Dominance sound on a fine brilliant foundation. The lines in the edge of cymbal can control the hittings and they were also designed in order to provide attacking sounds.

## RIDE

19" 20" 21" 22"

## CRASH

12" 13" 14" 15" 16" 17" 18" 19" 20" 21" 22"

## HI-HAT

10" 12" 13" 14" 15" 16"

## SPLASH

6" 7" 8" 9" 10" 11" 12"

## CHINA

10" 12" 13" 14" 15" 16" 17" 18" 19" 20" 21" 22"



# LEGEND SERIE

Hand hammered with strong hammer marks, easily turned off. Complex sound structure with enormous presence and large volume range. These are the cymbals which are also known with their hammerings and hittings, be sure "it is able to bring you to endless of the world" really great.

## RIDE

18" 19" 20" 21" 22"

## CRASH

13" 14" 15" 16" 17" 18" 19" 20" 21" 22"

## HI-HAT

12" 13" 14" 15" 16"

## SPLASH

8" 9" 10" 11" 12"

## CHINA

13" 14" 15" 16" 17" 18" 19" 20" 21" 22"



# NATURAL SERIE

Hand hammered however, not turned off. Sounded edgier and dry with relatively short sustain. This series has a great important in Turkish Cymbals. This is the first serie to be discovered after Custom Serie. Actually, all the cymbals' characters are distinguished here.



## RIDE

19" 20" 21" 22"

## CRASH

14" 15" 16" 17" 18" 19" 20" 21" 22"

## HI-HAT

10" 12" 13" 14" 15" 16"

## SPLASH

6" 7" 8" 9" 10" 11" 12"

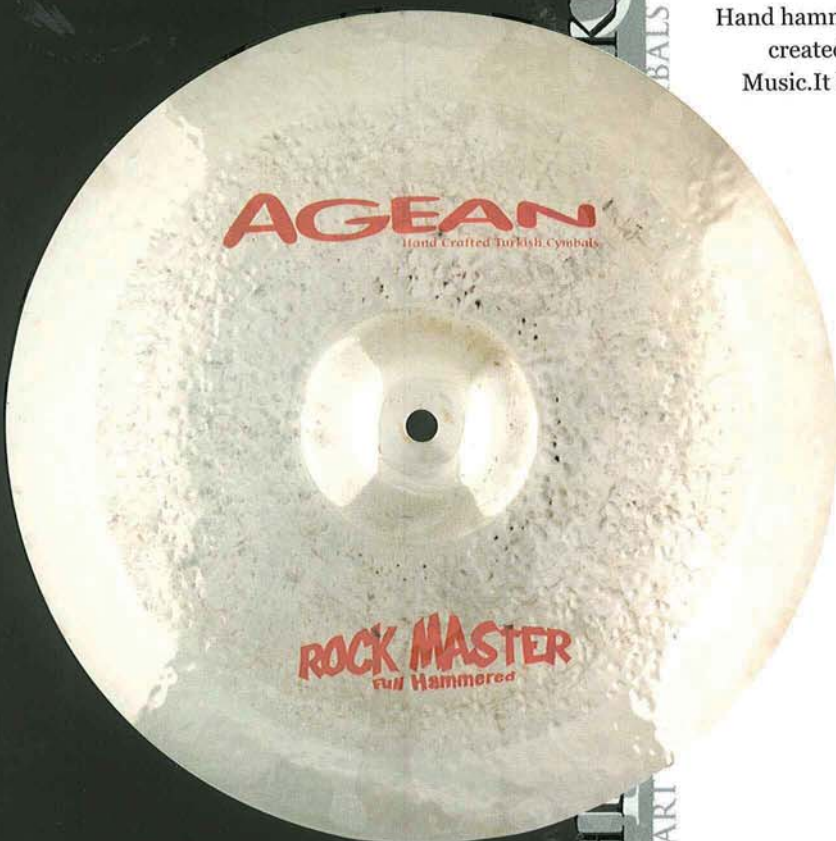
## CHINA

14" 15" 16" 17" 18" 19" 20" 21" 22"



# ROCK MASTER SERIE

Hand hammered, as it is understood from its name, it was completely created for (Rock, Hard Rock) or rather for all the styles of Rock Music. It has a character which is crazy and fluid, also dry and stiff.



## RIDE

19" 20" 21" 22"

## CRASH

13" 14" 15" 16" 17" 18" 19" 20" 21" 22"

## HI-HAT

13" 14" 15" 16"

## SPLASH

8" 9" 10" 11" 12"

## CHINA

14" 15" 16" 17" 18" 19" 20" 21" 22"



# SILVER SERIE

Hand hammered, it was created from silver and bronze and it mixes up the old quality together with new formula. It is certainly possible to use it in all the styles of music.

## RIDE

16" 18" 19" 20" 21" 22"

## CRASH

12" 13" 14" 15" 16" 17" 18" 19" 20" 21" 22"

## HI-HAT

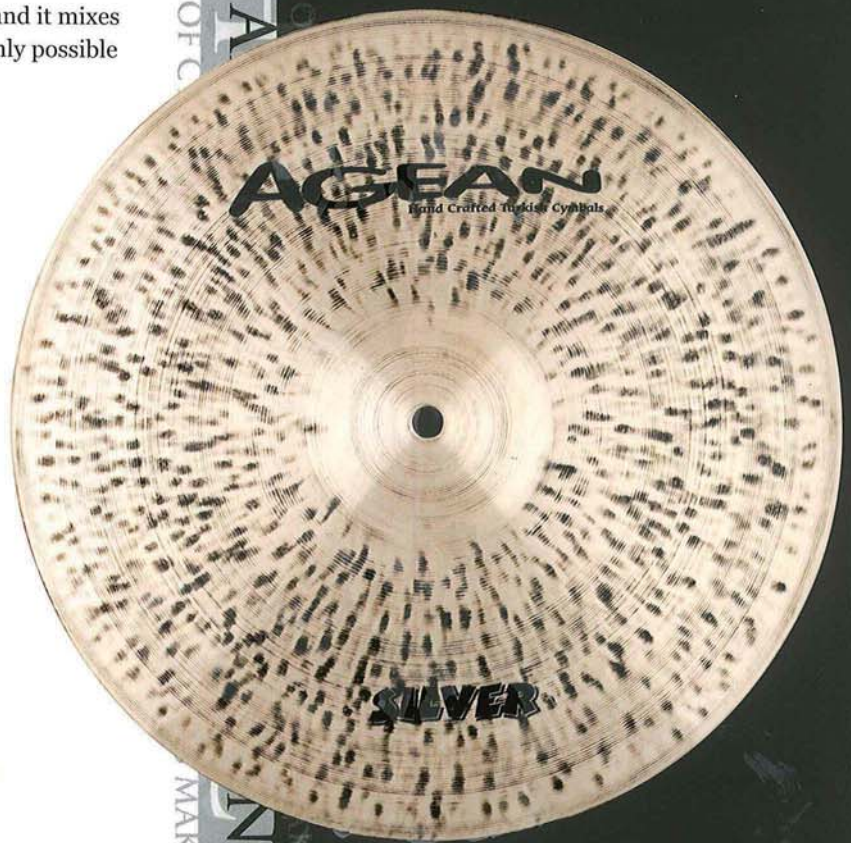
10" 12" 13" 14" 15" 16"

## SPLASH

8" 9" 10" 11" 12"

## CHINA

12" 14" 15" 16" 17" 18" 19" 20" 21" 22"



# STONED SERIE

Hand hammered, unusual a new character. There are many clear hittings on the surface. These hittings also provide strong and clear sound. It was also polished, very benignant and perfect.

## RIDE

19" 20" 21" 22"

## CRASH

13" 14" 15" 16" 17" 18" 19" 20" 21" 22"

## HI-HAT

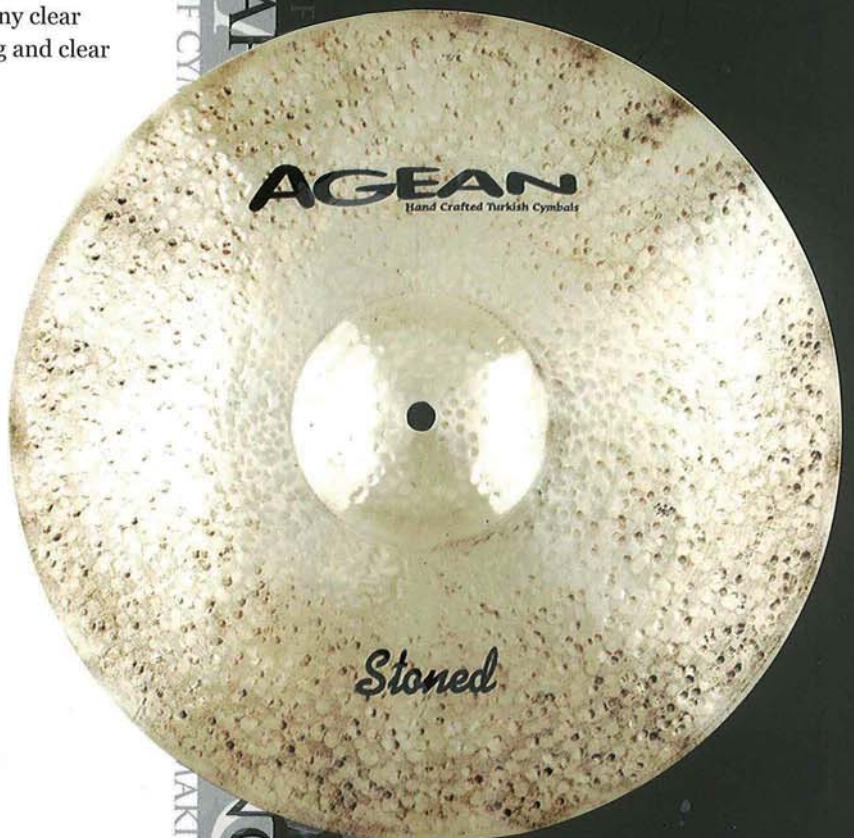
13" 14" 15" 16"

## SPLASH

8" 9" 10" 11" 12"

## CHINA

12" 14" 15" 16" 17" 18" 19" 20" 21" 22"



# AGORA SET

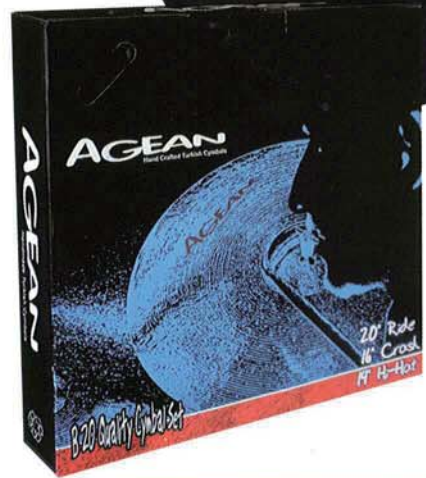
Hand hammered and got its shape by strong hammerings. It is a set which can answer to musical notes. Agora set was consisted of 14" Hi-hat-16" Crash-20" Ride. This series also includes (box and bag).



16" Crash

14" Hi-Hat

20" Ride



...G...  
...KING...  
...S MAKING... THE ART OF CYMBALS MAKING... THE ART OF CYMBALS

## AGEAN ACCESSORIES



Sizes  
M, L, XL





# EFFECT CYMBALS



**DELTA  
EFFECT CYMBALS**

13" 14" 15" 16" 17" 18" 19" 20"

# BRX CYMBALS

**RIDE**

19" 20" 21" 22"

**CRASH**

16" 17" 18" 19"

**HI-HAT**

14" 15"



# GONG CYMBALS

**BRILLIANT & NATURAL**

14" 15" 16" 17" 18" 19" 20" 21" 22"

THE ART OF CYMBALS MAKING... THE ART OF CYMBALS MAKING... THE ART OF CYMBALS MAKING... THE ART OF CYMBALS MAKING... THE ART OF CYMBALS MAKING... THE ART OF CYMBALS MAKING... THE ART OF CYMBALS MAKING... THE ART OF CYMBALS MAKING... THE ART OF CYMBALS MAKING... THE ART OF CYMBALS MAKING...



**FLEXIBLE  
EFFECT CYMBAL**

**RIDE / CRASH**

14" 16" 18" 20" 21" 22"

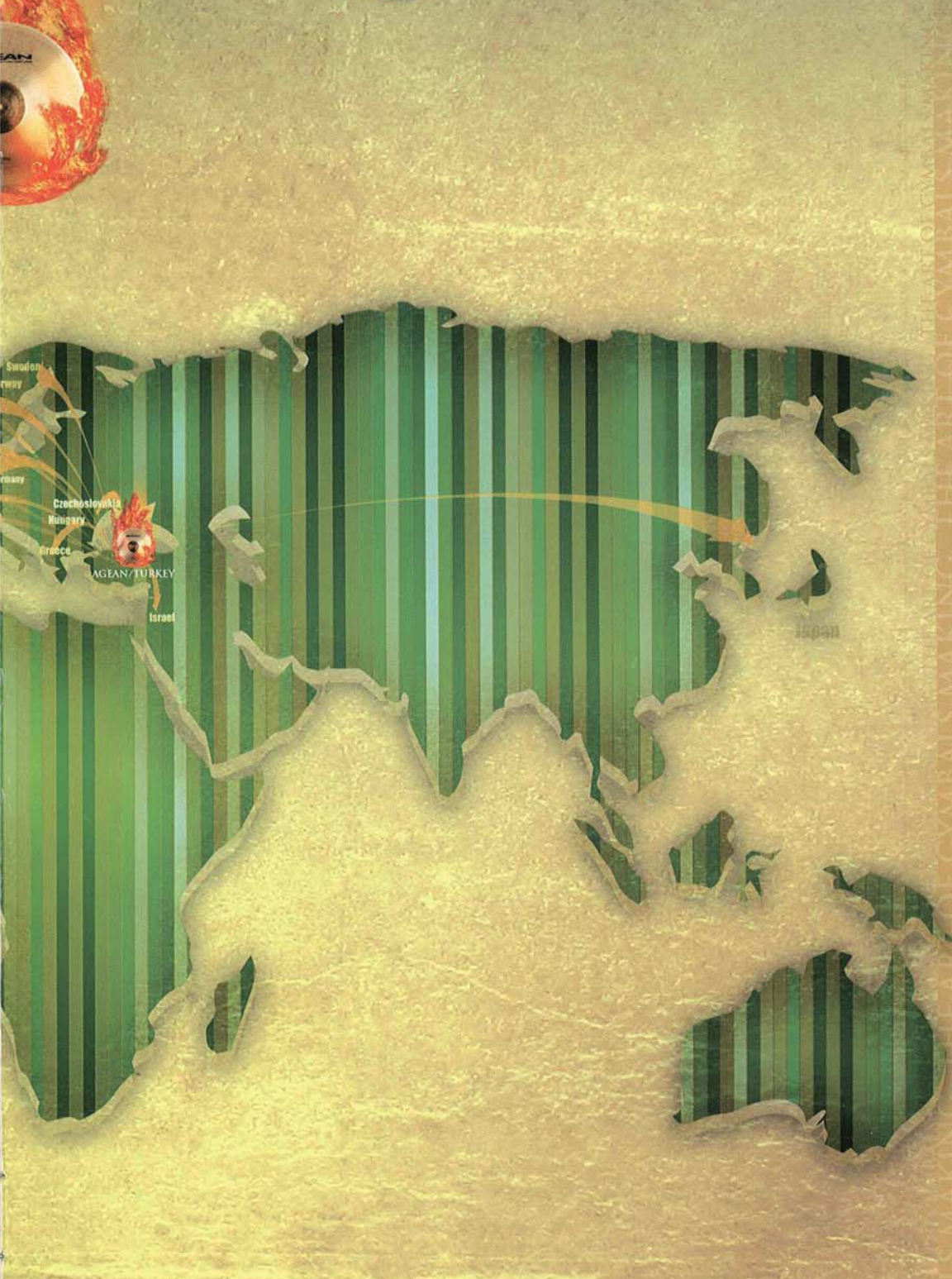


	Custom B-20	Custom Brilliant B-20	Extreme B-25	Special Jazz B-25	Karia B-25	Legend B-25	Natural B-20	Rock Master B-25	Silver B-25	Stoned B-25			
Ride	16" 18" 19" 20" 21" 22"	19" 20" 21" 22"	19" 20" 21" 22"	19" 20" 21" 22" 24"	19" 20" 21" 22"	18" 19" 20" 21" 22"	19" 20" 21" 22"	19" 20" 21" 22"	16" 18" 19" 20" 21" 22"	19" 20" 21" 22"			
Ride Medium				20" 21" 22"									
Ride Light	19" 20" 21" 22"											19" 20" 21" 22"	
Ride Jazz	20" 21" 22"					19" 20" 21" 22"			20" 21" 22"		20" 21" 22"		
Ride Sizzle	18" 20" 21" 22"					20" 21" 22"			20" 21"		18" 20" 21" 22"		
Ride Rock	20" 21" 22"							19" 20" 21" 22"					
Ride Heavy	20" 21" 22"	20" 21" 22"							19" 20" 21" 22"		20" 21" 22"	19" 20" 21" 22"	
Ride Extra Heavy													
Ride Mini Cup	19" 20" 21" 22"					19" 20" 21" 22" 24"	20" 21" 22"				19" 20" 21" 22"		
Ride Ping	20" 21" 22"						19" 20"		19" 20"	20"		19" 20"	
Ride Flat	20" 21" 22"	20" 21" 22"						20" 21" 22"	19" 20" 21" 22"		20" 21" 22"	19" 20" 21" 22"	
Crash				12" 13" 14" 15" 16" 17" 18" 19" 20" 21" 22"						13" 14" 15" 16" 17" 18" 19" 20" 21" 22"			
Crash Medium				17" 18" 19" 20" 21"			14" 15" 16" 17" 18" 19" 20" 21" 22"			14" 15" 16" 17" 18" 19" 20" 21" 22"			
Crash Medium Thin	12" 13" 14" 15" 16" 17" 18" 19" 20" 21" 22"				12" 13" 14" 15" 16" 17" 18" 19" 20" 21" 22"	13" 14" 15" 16" 17" 18" 19" 20" 21" 22"			12" 13" 14" 15" 16" 17" 18" 19" 20" 21" 22"				
Crash Thin			12" 13" 14" 15" 16" 17" 18" 19" 20" 21" 22"										
Crash Paper Thin													
Crash Rock							14" 15" 16" 17" 18" 19" 20" 21" 22"	13" 14" 15" 16" 17" 18" 19" 20" 21" 22"		13" 14" 15" 16" 17" 18" 19" 20" 21" 22"			
Crash Dark	16" 17" 18" 19" 20" 21"												
Crash Ride	20" 21" 22"						19" 20" 21" 22"	20" 21" 22"		19" 20" 21" 22"	20" 21" 22"		

	Custom B-20	Custom Brilliant B-20	Extreme B-25	Special Jazz B-25	Karia B-25	Legend B-25	Natural B-20	Rock Master B-25	Sliver B-25	Stoned B-25
Hi-Hat	10" 12" 13" 14" 15" 16"			13" 14" 15" 16"	10" 12" 13" 14" 15" 16"	12" 13" 14" 15" 16"	10" 12" 13" 14" 15" 16"	13" 14" 15" 16"	10" 12" 13" 14" 15"	13" 14" 15" 16"
Hi-Hat Hole				13" 14" 15"	13" 14" 15" 16"					
Hi-Hat Medium						13" 14" 15" 16"	13" 14" 15" 16"		13" 14" 15" 16"	
Hi-Hat Light		13" 14" 15" 16"		13" 14" 15" 16"			10" 12" 13" 14" 15" 16"		13" 14" 15" 16"	
Hi-Hat Matched	13" 14" 15" 16"		13" 14" 15" 16"			13" 14" 15" 16"				
Hi-Hat Sizzle				14" 15" 16"						
Hi-Hat Regular		13" 14" 15" 16"								
Hi-Hat Rock								13" 14" 15" 16"		
Splash			6" 7" 8" 9" 10" 11" 12"	8" 10" 12"		6" 7" 8" 9" 10" 11" 12"	8" 9" 10" 11" 12"	6" 7" 8" 9" 10" 11" 12"	8" 9" 10" 11" 12"	
Splash Rock	6" 7" 8" 9" 10" 11" 12"									
Bell			8" 10"		8" 9" 10"	8" 10" 12"	6" 7" 8" 9" 10" 11" 12"	8" 10" 12"		8" 9" 10" 11" 12"
Tinkle Bell	6" 7" 8" 9" 10"						6" 8" 9" 10" 11"			8" 9" 10" 11"
China				18" 19" 20"						
China Sweet	10" 12" 13" 14" 15" 16" 17" 18" 19" 20" 21" 22"				10" 12" 13" 14" 15" 16" 17" 18" 19" 20" 21" 22"	13" 14" 15" 16" 17" 18" 19" 20" 21" 22"	14" 15" 16" 17" 18" 19" 20" 21" 22"	12" 14" 15" 16" 17" 18" 19" 20" 21" 22"		
China Cupless				18" 19" 20"						
Band Orchestral	8" 10" 12" 13" 14" 15" 16" 17" 18" 19" 20" 21" 22"									
Super Symphonic	16" 17" 18" 19" 20" 21" 22"									
Gong		14" 15" 16" 17" 18" 19" 20" 21" 22"					14" 15" 16" 17" 18" 19" 20" 21" 22"			



# WORLD



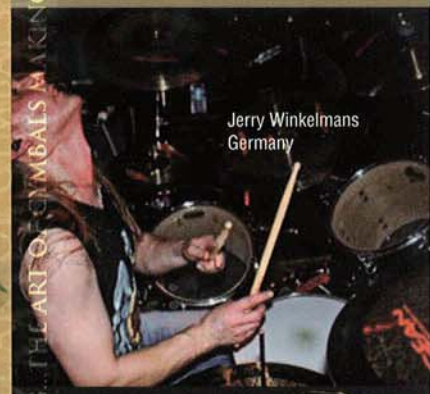
THE ART OF CYMBALS MAKING... THE ART OF CYMBALS MAKING... THE ART OF CYMBALS MAKING... THE ART OF CYMBALS MAKING... THE ART OF CYMBALS MAKING...



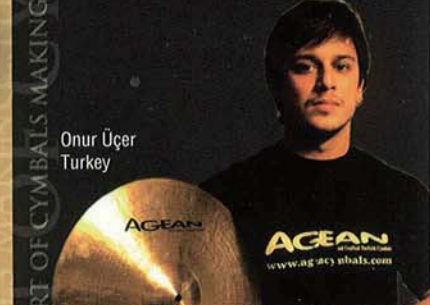
Johan Nunez  
Belgium



Gustavo Teixeira  
Brasil

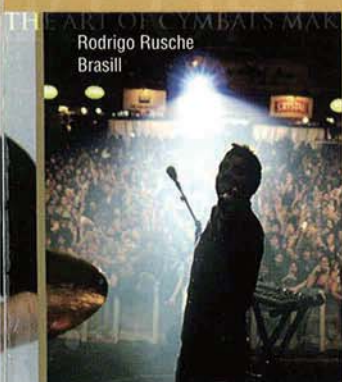


Jerry Winkelmans  
Germany

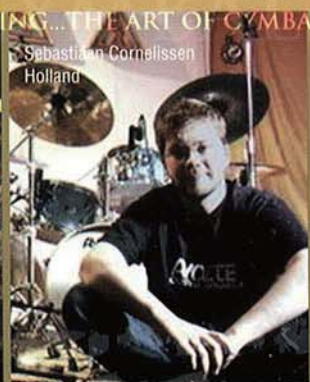


Onur Üçer  
Turkey

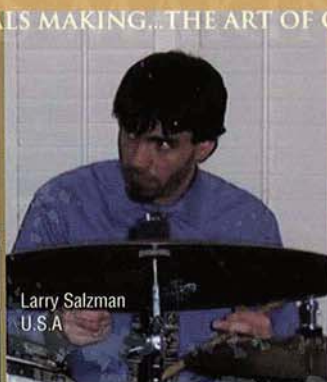
THE ART OF CYMBALS MAKING... THE ART OF CYMBALS MAKING... THE ART OF CYMBALS MAKING... THE ART OF CYMBALS MAKING... THE ART OF CYMBALS MAKING...



Rodrigo Rusche  
Brasil



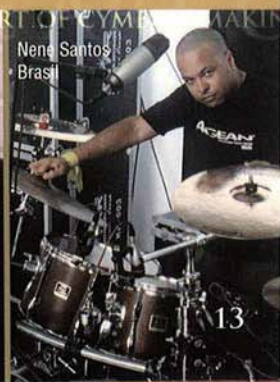
Sebastian Cornelissen  
Holland



Larry Salzman  
U.S.A.



Pommes Pommerenke  
Germany



Nene Santos  
Brasil

## DARBUKA:

Darbuka is the most important rhythm instrument of the eastern music. From B.C. to today it was used by the sivilizations in Anatolia, Mesopotomia and Middle Asia, passed through the phases and took its last shape as Arabic (Egyptian) and Turkish darbuka today.

The body was originally made using baked earth but it turned to be aluminium and copper. After all these changes, today each darbuka is made by the hand work of the masters of years. Various designs with the methods which are only used in Turkey are embroidered on the copper and aluminium darbukas and it supplies the rhythm that is the heart of music and accompanies the oriental dances.

## KIRMIZIGÜL:

As Kirmizigül, we started our production experiences in 1978. When the production with hand-art was not so rare in Turkey, we had been given a long period of education by the masters of this job and afterwards we made a new step at production founding our company in 1996.

Today, we are serving the darbuka-lovers from beginners to the professionals with our aluminium and copper darbukas which are unique art-works hand-made by the masters of Erzincan embroidering. We have been running a new marketing strategy in the recent years, and as a result, our quality is getting better and better by exporting to Europe and other countries of the world. We have the honour of participating to fairs with our booth which are the biggest music fairs of the world with hundreds and thousands of visitors.

Our aim is to meet the experiences and the beauty of the past with the rhythm of today and carry it to tomorrow, helping the communication between the cultures using the universality of the art.



## ALUMINIUM MODELS

### AL SERIES



CODE	DIAMETER	HEIGHT	BOLTS
AL - 00	13.5 cm / 5.3"	23.5 cm / 9.3"	4
AL - 01	15 cm / 6"	29 cm / 11"	4
AL - 02	17 cm / 6.5"	32 cm / 12.5"	4
AL - 03	18 cm / 7"	35 cm / 13.5"	4
AL - 04	21 cm / 8"	37 cm / 14.5"	5
AL - 05	22 cm / 8.5"	38 cm / 14.5"	5
AL - 06	22 cm / 8.5"	42 cm / 15.5"	5
AL - P105	22 cm / 8.5"	38 cm / 14.5"	5

### ALZ SERIES



CODE	DIAMETER	HEIGHT	BOLTS
ALZ 00	13.5 cm / 5.3"	23.5 cm / 9.3"	4
ALZ 01	15 cm / 6"	28 cm / 11"	4
ALZ 02	16.5 cm / 6.5"	31.5 cm / 12.5"	4
ALZ 03	17.5 cm / 7"	34.5 cm / 13.5"	4
ALZ 04	20 cm / 8"	35.5 cm / 14"	5
ALZ 05	22 cm / 8.5"	37 cm / 14.5"	5
ALZ 06	22 cm / 8.5"	42 cm / 16.5"	5

### 00 SERIES



CODE	DIAMETER	HEIGHT	BOLTS
000	13.5 cm / 5.3"	23.5 cm / 9.3"	4
001	15 cm / 6"	28 cm / 11"	4
002	16.5 cm / 6.5"	31.5 cm / 12.5"	4
003	17.5 cm / 7"	34.5 cm / 13.5"	4
004	20 cm / 8"	35.5 cm / 14"	4
005	22 cm / 8.5"	37 cm / 14.5"	4
006	22 cm / 8.5"	42 cm / 16.5"	4

### AB SERIES



CODE	DIAMETER	HEIGHT	BOLTS
Ab00	13.5 cm / 5.3"	23.5 cm / 9.3"	4
AB01	15 cm / 6"	28 cm / 11"	4
AB02	16.5 cm / 6.5"	31.5 cm / 12.5"	4
AB03	17.5 cm / 7"	34.5 cm / 13.5"	4
AB04	20 cm / 8"	35.5 cm / 14"	5
AB05	22 cm / 8.5"	37 cm / 14.5"	5
AB06	22 cm / 8.5"	42 cm / 16.5"	5

### BO SERIES



CODE	DIAMETER	HEIGHT	BOLTS
B04	20 cm / 8"	35.5 cm / 14"	5
B05	22 cm / 8.5"	37 cm / 14.5"	5
B06	22 cm / 8.5"	42 cm / 16.5"	5

### RO SERIES



CODE	DIAMETER	HEIGHT	BOLTS
R04	20 cm / 8"	35.5 cm / 14"	5
R05	22 cm / 8.5"	37 cm / 14.5"	5
R06	22 cm / 8.5"	42 cm / 16.5"	5

# ANATOLIA COPPER MODELS

## COPER SERIES



CODE	DIAMETER	HEIGHT	BOLTS
CPER00	13.5 cm / 5.3"	23.5 cm / 9.3"	4
CPER01	15 cm / 6"	28 cm / 11"	4
CPER02	16.5 cm / 6.5"	31.5 cm / 12.5"	4
CPER03	17.5 cm / 7"	34.5 cm / 13.5"	4
CPER04	20 cm / 8"	35.5 cm / 14"	5
CPER05	22 cm / 8.5"	37 cm / 14.5"	5
CPER06	22 cm / 8.5"	42 cm / 16.5"	5
CPER25	25 cm / 9.7"	49 cm / 19.4"	8

## YEL&HM SERIES



CODE	DIAMETER	HEIGHT	BOLTS
YEL04	20 cm / 8"	35.5 cm / 14"	5
YEL05	22 cm / 8.5"	37 cm / 14.5"	5
YEL06	22 cm / 8.5"	42 cm / 16.5"	5
HM04	20 cm / 8"	34.5 cm / 14"	5
HM05	22 cm / 8.5"	37 cm / 14.5"	5
HM06	22 cm / 8.5"	42 cm / 16.5"	5

## EGYPT COLOR MODELS



CODE	DIAMETER	HEIGHT	BOLTS
EOR101	21.5 cm / 8.3"	38 cm / 15"	6
EGY101	21.5 cm / 8.3"	38 cm / 15"	6
EGL201	22 cm / 8.7"	44 cm / 17.3"	8
EGR201	22 cm / 8.7"	44 cm / 17.3"	8
EGY201	22 cm / 8.7"	44 cm / 17.3"	8
EGY301	22 cm / 8.7"	44 cm / 17.3"	8

## EGYPT COPPER MODELS



CODE	DIAMETER	HEIGHT	BOLTS
EGY102	21.5 cm / 8.5"	38 cm / 15"	6
KR203	22 cm / 8.7"	44 cm / 17.3"	8
MAJOR	22 cm / 8.7"	50 cm / 19.4"	8
TM204	22 cm / 8.7"	50 cm / 19.4"	8

## EGYPT WINLEX MODELS



CODE	DIAMETER	HEIGHT	BOLTS
EGYB201	22 cm / 8.7"	44 cm / 17.3"	8
EGYK201	22 cm / 8.7"	44 cm / 17.3"	8
EGYM201	22 cm / 8.7"	44 cm / 17.3"	8
EGYO201	22 cm / 8.7"	44 cm / 17.3"	8
EGYZ201	22 cm / 8.7"	44 cm / 17.3"	8

## EGYPT CAST MODELS



CODE	DIAMETER	HEIGHT	BOLTS
Bs404	22 cm / 8.7"	44 cm / 17.3"	8
BS405	25 cm / 9.7"	50 cm / 19.4"	8
KZ404	22 cm / 8.7"	44 cm / 17.3"	8
KZ405	25 cm / 9.7"	50 cm / 19.4"	8

**AGEAN®**  
Hand Crafted Turkish Cymbals

**Kirmizigöl®**  
HANDMADE DARBUKAS

**OFFICE**

Fatih Mah. Aksaray Cad. 233. Sok. No:16 (34225) Esenler / İstanbul / TURKEY

**PHONE :**

+90 (212) 569 36 22 +90 (212) 647 96 50

**FAX :**

+90 (212) 647 95 71

**E-MAIL :**

info@ageancymbals.com

info@kirmiziguldarbukas.com

**AGEAN®**  
Hand Crafted Turkish Cymbals

**Kirmizigöl®**